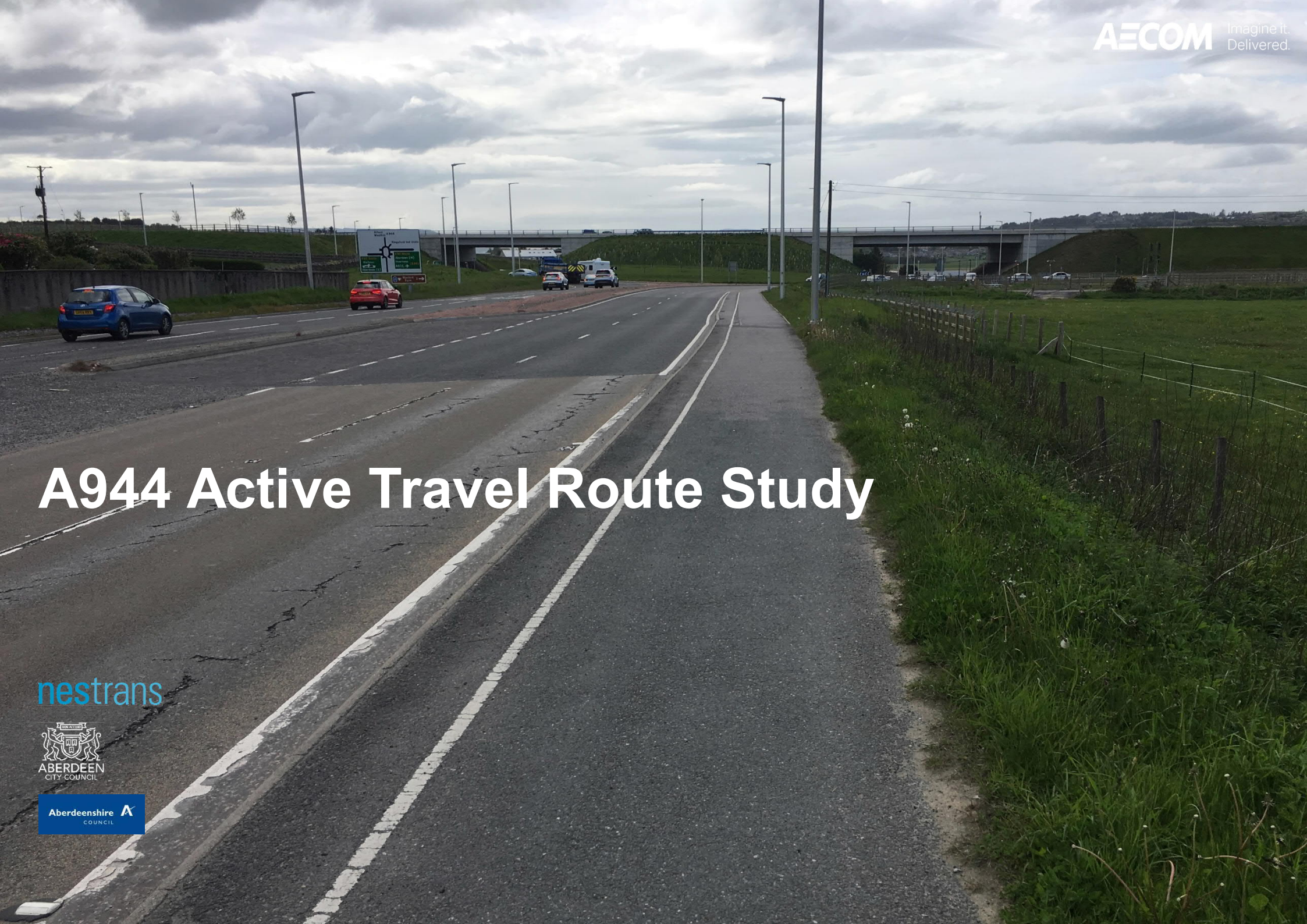


A944 Active Travel Route Study

nestrans



Aberdeenshire COUNCIL



Introduction

Nestrans, the North East Scotland Regional Transport Partnership, has commissioned AECOM to explore options for a new active travel route on the A944 between Westhill in Aberdeenshire and Kingswells in Aberdeen City. The study is being progressed in line with national, regional and local policy objectives to increase levels of active travel and reduce private car journeys.

The ultimate objective of the study is to provide recommendations to inform the implementation of a continuous active travel route for walking and cycling between Westhill and Kingswells. The study will seek to promote a route that is constructed in accordance with standards set out in national guidelines and will take a multidisciplinary approach, recognising the requirement to consider the interaction of the project with the AWPR (A90)/A944 Kingswells South junction.

This briefing paper has been prepared to set out the study scope and objectives, the approach that will be taken by the study team and details how people can get involved to help determine the study recommendations.



Study Objectives

The study is being progressed with the following objectives:

- To develop a flagship segregated cycle corridor between Westhill and Kingswells.
- To ensure this provides a safe, direct, convenient, coherent and continuous active travel link between Westhill and Kingswells and serves a range of intermediate destinations, thus facilitating and encouraging strategic and local active travel journeys.
- To improve the transport options available to those living and/or working on or alongside the corridor by making active travel a safe and viable alternative to motorised travel, thus encouraging a shift from car-based to active forms of transport.
- To engage with current and potential users and community representatives to develop and design options that meet the needs of all users;
- To ensure that infrastructure improvements are accompanied by an intensive behaviour change campaign within affected communities and with key trip generators along the route in order to raise awareness and encourage use of the route; and
- To raise the profile of active travel throughout the region and to encourage more healthy lifestyles for those living and working in Aberdeen and Aberdeenshire.



Study Approach

A number of key tasks are being undertaken to progress the study including:

- Desktop review of active travel policies and guidance at the national, regional and local level.
- Stakeholder engagement to identify problems, issues, opportunities and constraints on the A944 route.
- Option development taking into account the views of various organisations, local community representatives in the study area and members of the public.
- Option appraisal, in accordance with Scottish Transport Appraisal Guidance (STAG).
- Preparation of a detailed report setting out the study process, option appraisal and final recommendations.



Stakeholder Engagement

A programme of stakeholder engagement will be central to the successful delivery of the project.

Consultation opportunities will provide stakeholders with the opportunity to engage with the project team from the outset of the study, providing a means of feedback on the key issues and opportunities associated with active travel along the A944 between Westhill and Kingswells.

Comments on any aspect of the study will be welcomed and encouraged by the study team as the work progresses. Consultation shall be undertaken in two main stages:

1. At pre-option development stage; in order to gather the views of stakeholders on the problems, issues, constraints and opportunities associated with active travel in the study area.
2. At post-option development stage; in order to gather feedback on the options to facilitate their appraisal.

Nestrans – with the support of Aberdeen City Council and Aberdeenshire Council – will disseminate details on when stakeholders, community representatives and members of the public can get involved in the study.

All engagement activity will directly feed into the study recommendations. These will be made available in early spring 2020.



Contacts

Jon Barron
Cycling Development Officer

Nestrans
Archibald Simpson House
27-29 King Street
Aberdeen
AB24 5AA

Andrew Robb
Senior Consultant

AECOM
1 Marischal Square
Aberdeen
AB10 1BL